

## Wet Centre Reels

Phuel has responded to market demand by designing the first all stainless steel full-bore Wet Centre Reels. The Phuel Reels have been incorporated successfully into both new and existing Pressure Control Units and provide continuous fluid supply from one or multiple connections. You just specify your requirements and we'll do the rest.



**Three distinct versions are available.**

### **Incorporated Air Motor**

A compact stainless steel air motor is built into the reel hub ensuring the maximum hose capacity within the smallest footprint. The air motor provides a safe torque that can spool the hose but still be stopped (motor stalled) by gripping down on the hose.

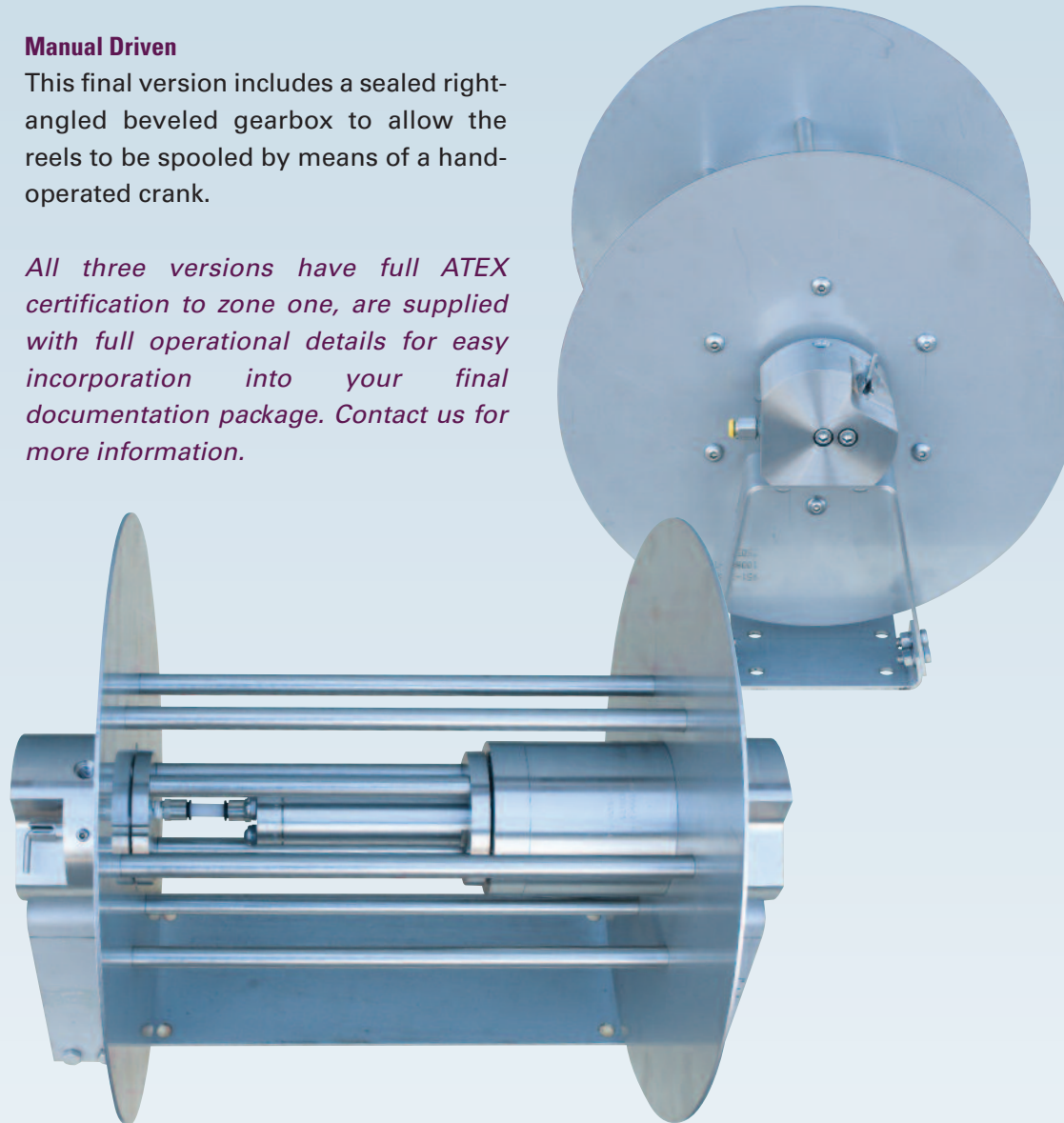
### **Selective Air Driven**

To further reduce the footprint we can supply a version in which the air motor is mounted on a separate support plate and can be inserted into the chosen reel to create drive. This not only offers the same safe operation but if supplied with the foot pedal control option also leaves both hands free for spooling the hose.

### **Manual Driven**

This final version includes a sealed right-angled beveled gearbox to allow the reels to be spooled by means of a hand-operated crank.

*All three versions have full ATEX certification to zone one, are supplied with full operational details for easy incorporation into your final documentation package. Contact us for more information.*



**A FLEXIBLE  
APPROACH,  
IMPROVED SAFETY  
AND EFFICIENCY  
THROUGH DESIGN**

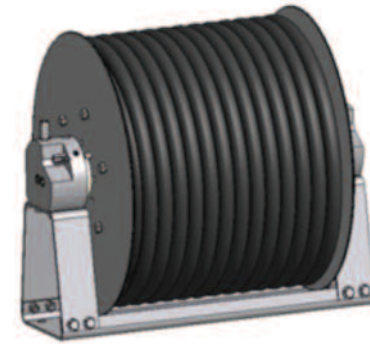
**Phuel Oil Tools Ltd**  
Unit 17  
Denmore Industrial Estate  
Denmore Rd  
Bridge of Don  
Aberdeen AB23 8JW

Tel: 01224 820 016  
info@phueloiltools.com

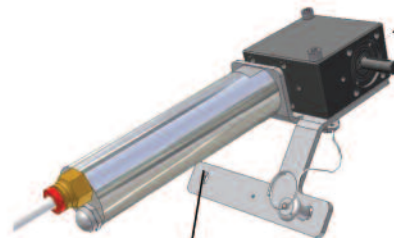
**www.phueloiltools.com**

# Wet Centre Reels

Compact wet centre reel with integral air motor

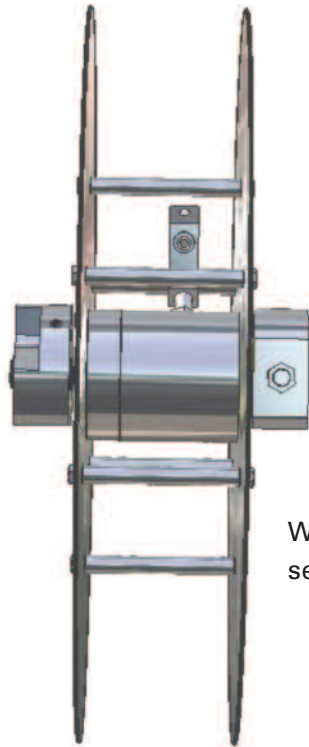
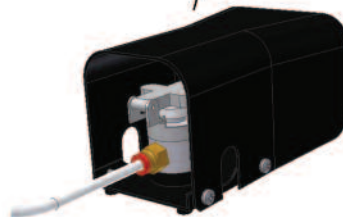


Bi Directional gearbox to allow for reels to be mounted in a confined space

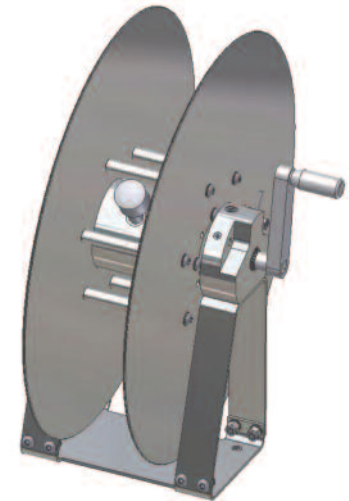


Air Motor

Foot pump to allow both hands free to carry out spooling process



Wet centre reel with selective drive



Manual Reel with sealed gearbox

## TECHNICAL DATA ( Integral Motor)

	Single	Triple
Working Temperature	-18°C to 121°C	- 18°C to 121°C
Weight with hose	156 lbs	187 lbs
Weight without hose	96 lbs	103 lbs
Air Consumption	19 SCFM	19 SCFM

## TECHNICAL DATA

	Selective	Manual
Working Temperature	-18°C to 121°C	-18°C to 121°C
Connection	BSP, autoclave	BSP, autoclave
Weight Without Hose	74 lbs	75 lbs
Air Consumption	19 SCFM	N/A